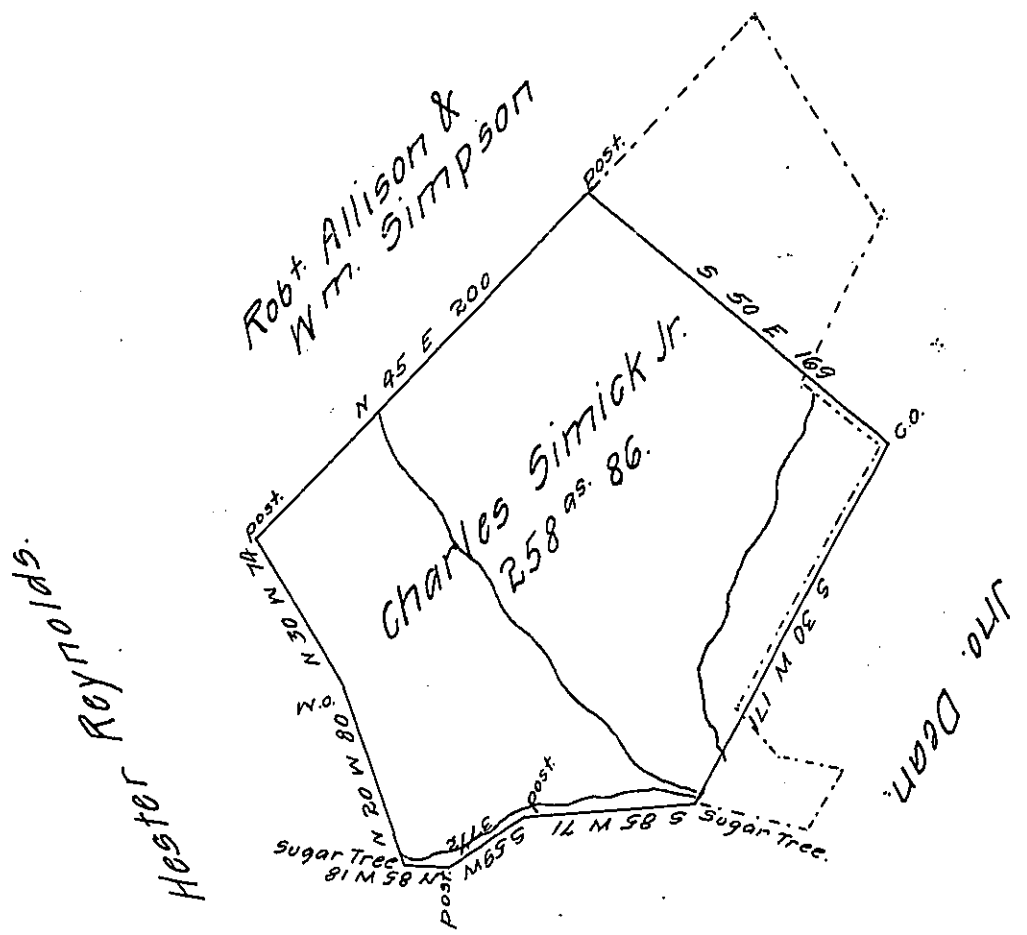


FORM NO 1.



Situate on a run emptying into the west side of the Rays-
town Branch of Juniatta—at Dunri's falls about one and
one half miles up said run in Walker township Hunting-
don County containing two hundred and fifty eight acres
and eighty six perches and allowance of six per cent.
Surveyed the —day of — for Charles Simmick Jr. on order
No. 1706 dated the 28th day of October 1766.

To Jacob Spangler Esqr. S. G. Daniel Africa D. S.

The dotted lines represent part of the draught of a tract of
land surveyed for Robert Wason Sen^r on warrant dated
the 26th day November 1817 this tract interferes two hund-
red and fifty eight acres and eighty six perches with the
Charles Simmick survey.

Robert Wason devised to his heirs who sold part to Widow
Hone the present owner they sold one other part to Jacob
Hawn the present owner the residue owned by the Heirs
of Robt. Wason.

Robt. Wason pat^d.

IN TESTIMONY that the above is a copy of the original remaining on file in
the Department of Internal Affairs of Pennsylvania, made
conformably to an Act of Assembly approved the 16th day of
February, 1833, I have hereunto set my Hand and caused
the Seal of said Department to be affixed at Harrisburg,
this seventeenth day of July 1908.

Henry Horvath
Secretary of Internal Affairs.